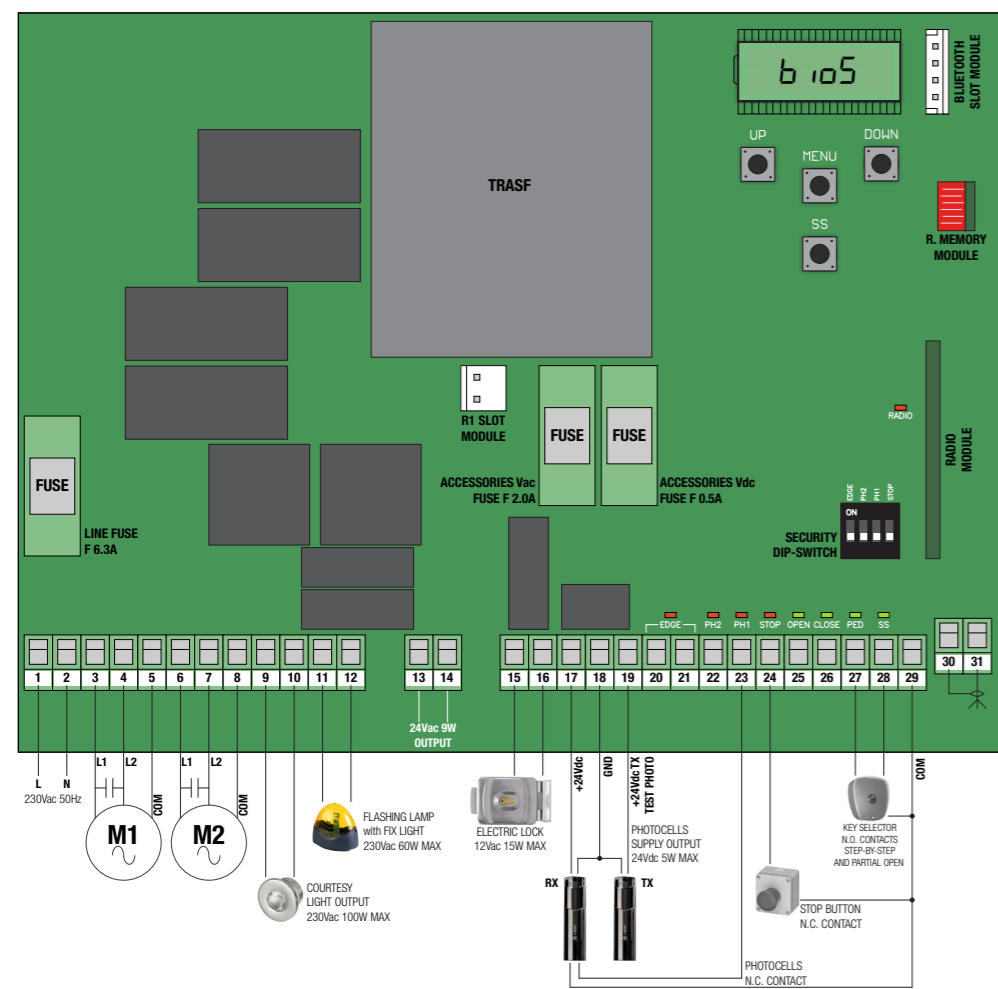
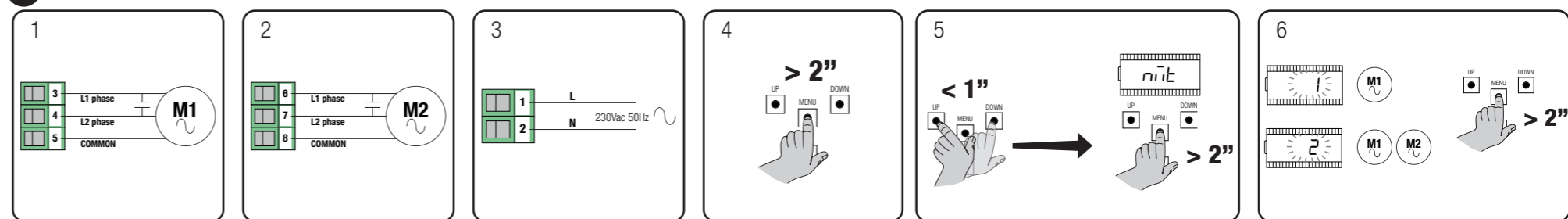


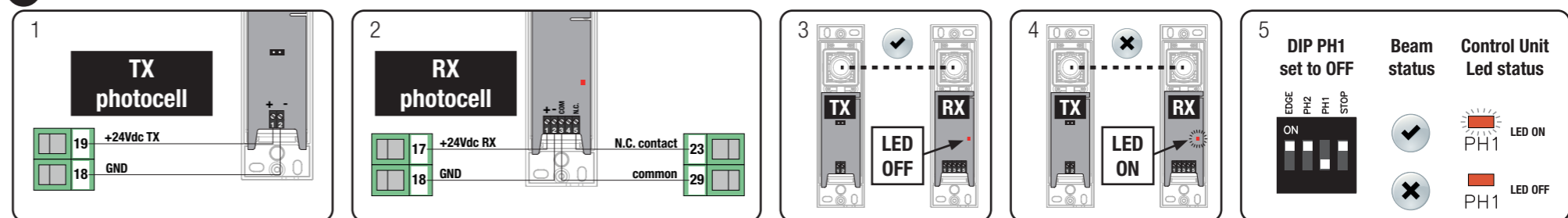
CONNECTION DIAGRAM



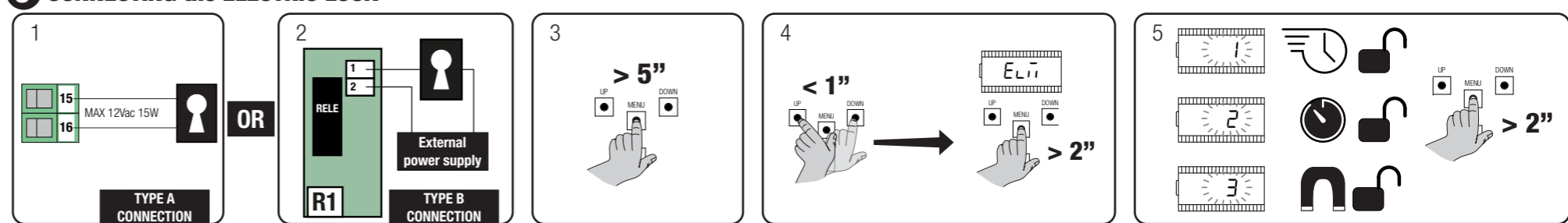
1 POWER SUPPLY and MOTOR SETTINGS



2 CONNECTING ONE PAIR of IRIS PHOTOCELL



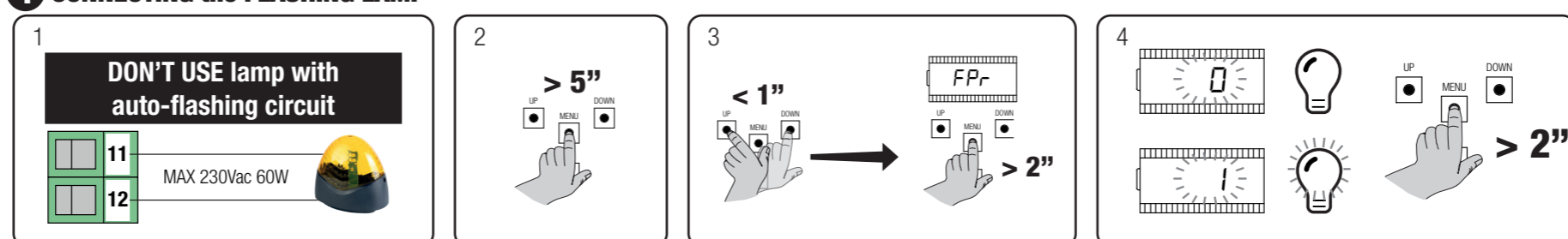
3 CONNECTING the ELECTRIC LOCK



TECHNICAL CHARACTERISTICS

Power Supply (board)	230Vac - 50/60Hz
Absorption (board)	55mA @ 230Vac
Motors power supply	230Vac - 50/60Hz
Max power absorbed from motors	2 x 700W
Radio receiver	433MHz - Rolling Code Allmatic
Max transmitters	1000

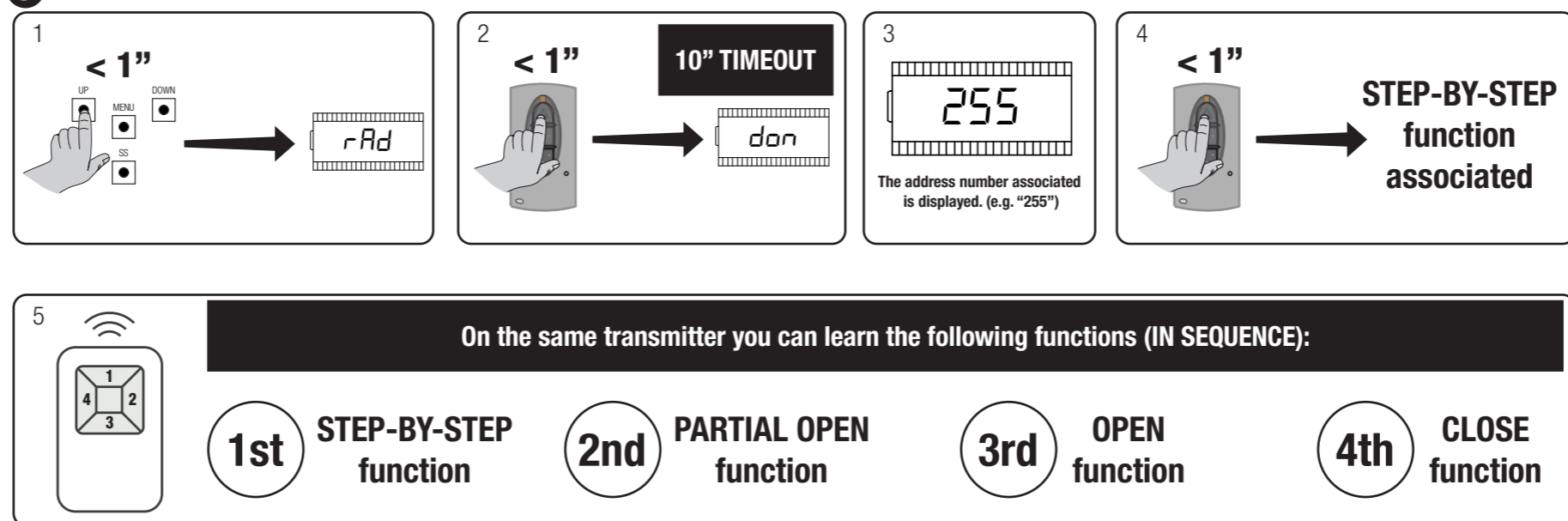
4 CONNECTING the FLASHING LAMP



FAQs

- One or more safety Leds (EDGE, PH2, PH1, STOP) are switched off.** Check accessories fuse and connection to the device related to the LED that is turned off. Every safety device, if present, must be connected to the card with a contact NORMALLY CLOSED and the corresponding DIP SWITCH must be in OFF.
- During the learning of the strokes the gate does not move.** Check fuses, check motors connection and capacitors to the control unit.
- During the learning of the strokes the gate moves but very slowly and fatigue.** Check motors installation dimensions and maximum weight supported by the motors. Check that, with the motors unlocked, the gate moves by hand smoothly and with no difficult for the entire length of the stroke. Set the basic SSL parameter to 1.
- During the learning of the strokes the gate doors moves simultaneously or with an incorrect sequence.** Verify correct connection of motors phases (L1 - L2 - COM) to the control unit and that there are no short circuits between them.

5 LEARNING of one TRANSMITTER



32026 Borgo Valbelluna - Belluno - Italy
Via dell'Artigiano, n°1 - Z.A.
Tel. 0437 751175 - 751163 r.a. Fax 0437 751065
www.allmatic.com - E-mail: info@allmatic.com

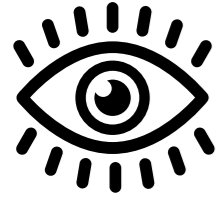
BIOS2 230

QUICK START GUIDE
product code 12006515



6 LEARNING of the STROKE

1

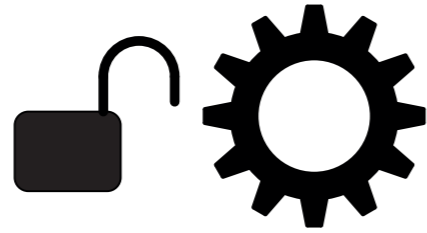


CHECK all the BIOS SAFETY LEDs are ON

EDGE PH2 PH1 STOP

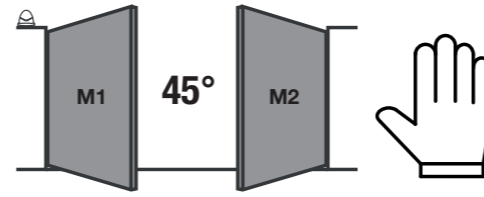
2

Unlock the MOTORS



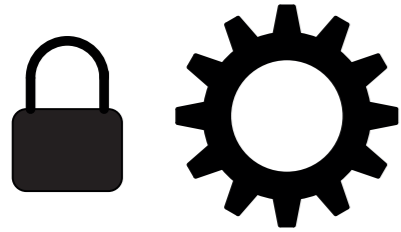
3

Manually place the gates at the middle of the strokes



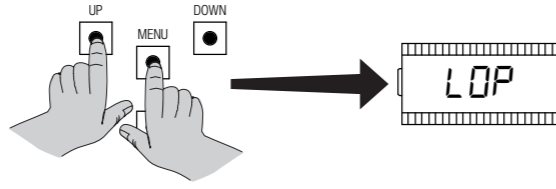
4

Lock the MOTORS



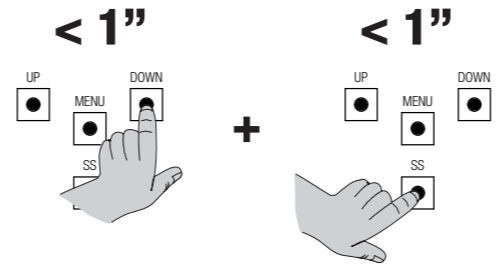
5

> 3"



6

CHANGE GATES DIRECTION IF WRONG

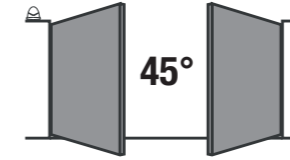


FOLLOW THE SEMI-AUTOMATIC PROCEDURE

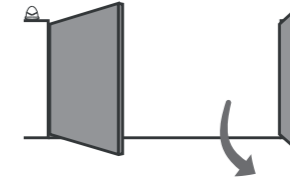


7 SEMI-AUTOMATIC PROCEDURE of LEARNING

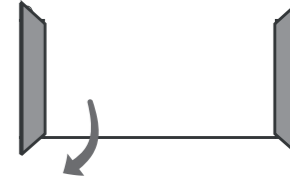
START



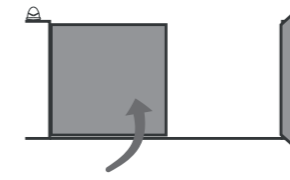
STEP 1



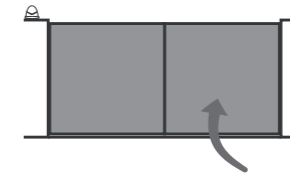
STEP 2



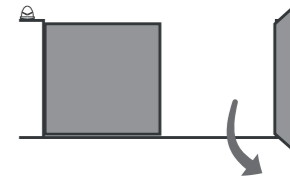
STEP 3



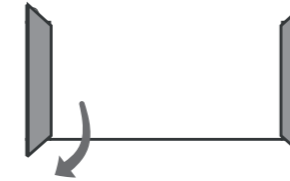
STEP 4



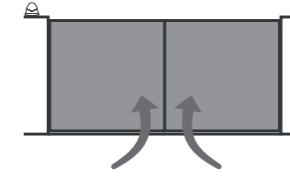
STEP 5



STEP 6



END



EACH STEP begins with a STEP-BY-STEP command

